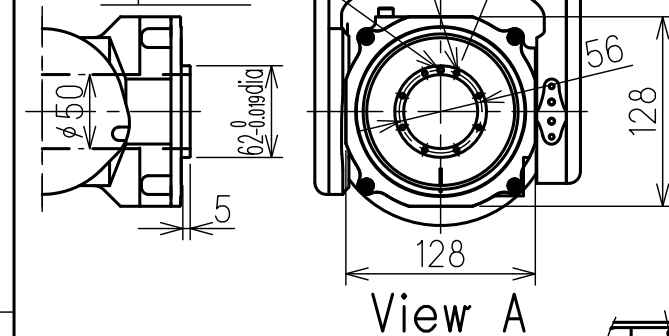


DWG.NO. HW1382566

Tapped holes M4 (8holes)
Depth: 8mm

4^{+0.012} dia (1hole)
Depth: 6mm



Tapped holes M6 (2holes)
Depth: 12mm

View D

P-Point (maximum envelope)

View C

Type	Note
YR-MA1440/MH12-A00	STANDARD

Available Range

Air exhaust PT3/8 with pipe plug (A)

Air exhaust PT3/8 with pipe plug (B)

Internal user wiring connector type is JL05-2A20-29SC (with cap)

Matching connector type is JL05-6A20-29P (provided users)

Tapped holes M8 (4holes)
Depth: 18mm

Air inlet PT3/8 with pipe plug (A)

Air inlet PT3/8 with pipe plug (B)

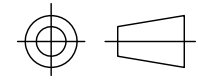
welding power source's terminal board

Internal user wiring connector type is JL05-2A20-29PC (with cap)

Matching connector type is JL05-6A20-29S (provided users)

View B

Note:
1. All rights reserved.
2. Please note that the data is subject to be deleted without advance notice.
3. No warranty is given in relation to the data including the specification.
4. We are not responsible for any damages or loss caused by the use of the data.



SCALE 1:20

YASKAWA

株式会社 安川電機

Reference Drawing

TITLE
MOTOMAN-MA1440
DIMENSION DIAGRAM

DWG.NO.

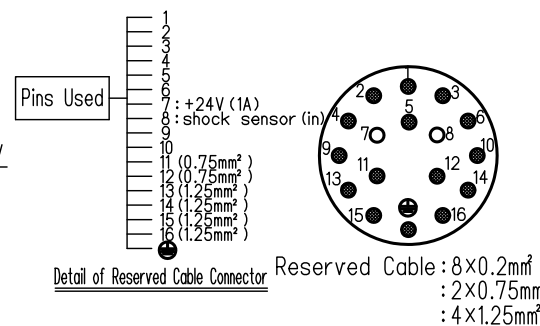
HW1382566

Units: mm

Item	Model	MOTOMAN-MA1440
Configuration		Articulated Robot
Degree of Freedom		6
Payload		6kg
Repeatability		±0.08mm
Range of Motion	S-Axis	-170° ~ +170°
	L-Axis	-90° ~ +155°
	U-Axis	-175° ~ +240°
	R-Axis	-150° ~ +150°
	B-Axis	-135° ~ +90°
	T-Axis	-210° ~ +210°
Max Speed	S-Axis	4.01rad/s, 230° /s
	L-Axis	3.49rad/s, 200° /s
	U-Axis	4.01rad/s, 230° /s
	R-Axis	7.50rad/s, 430° /s
	B-Axis	7.50rad/s, 430° /s
	T-Axis	11.00rad/s, 630° /s
Allowable Moment	R-Axis	10.5N·m (1.07kgf·m)
	B-Axis	10.5N·m (1.07kgf·m)
	T-Axis	3.2N·m (0.33kgf·m)
Allowable Inertia (GD ² /4)	R-Axis	0.28kg·m ²
	B-Axis	0.28kg·m ²
	T-Axis	0.06kg·m ²
Approx. Robot mass		130kg
Ambient Conditions	Temperature	0~45°C
	Humidity	20~80%RH (Non-condensing)
	Vibration	Less than 4.9m/s ² (0.5G)
	Others	•Free from explosive or corrosive gas and liquid. •Free from dust, oil of water. •Free from electrical noise.
Power Requirements		1.5KVA

•SI units are used in this table.
However, gravitational units are uses in ().
•Repeatability is conformed to ISO 9283.
•The manipulator is in the home position.

※Refer to connection diagram for a reserved cable (DWG No.HW0383298) when using the connector: No.7 or No.8.



SIZE A3