

MOTOMAN MPL80 II

Palletising with the MPL-series



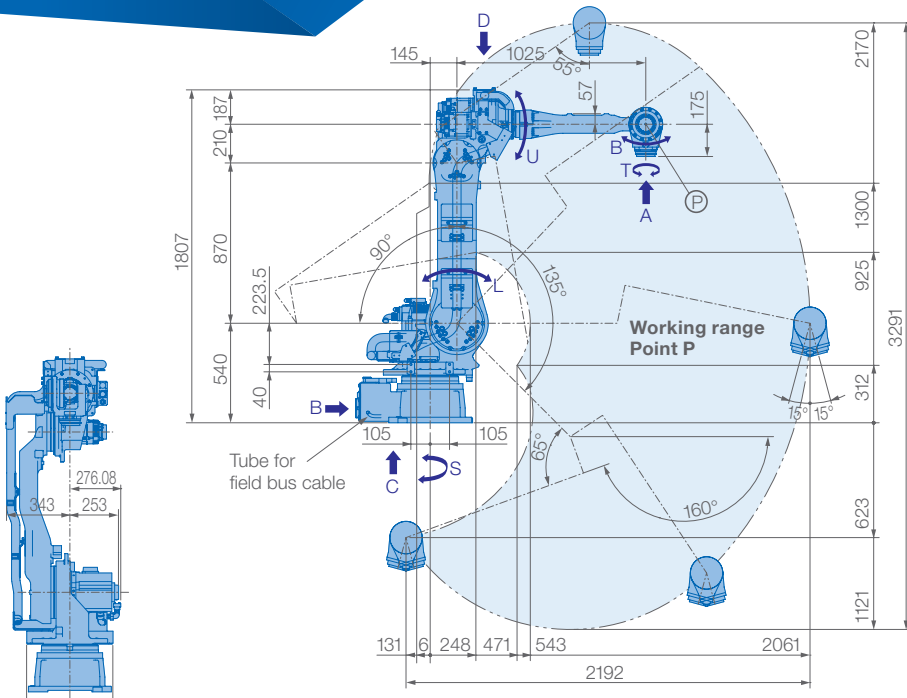
The versatile and powerful 5-axis MOTOMAN MPL80 II robot provides high performance in case palletising, bag palletising, order picking and many further logistical tasks for end-of-line or distribution center automation.

Its extensive vertical reach of 3291 mm combined with 2061 mm horizontal reach enables high palletising loads. Empty tubes for internally routed airlines and cables from base to end-of-arm tool maximize system reliability.

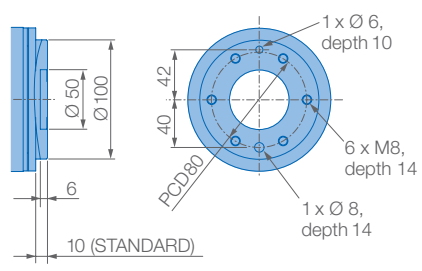
The MPL80 II is driven by the high-performance DX200 controller which is available with the optional Category 3 Functional Safety Unit (FSU), providing a variety of new safety functions.

KEY BENEFITS

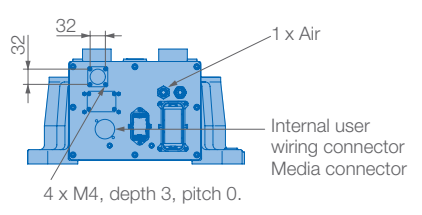
- Flexible and powerful
- High Payload: 80 kg
- Maximum reliability, empty tubes for internally routed airlines and cables
- Internally routed fieldbus connection (optional) to T-axis/tool
- Enhanced Safety Functions for DX200 Functional Safety Controller (FSU)



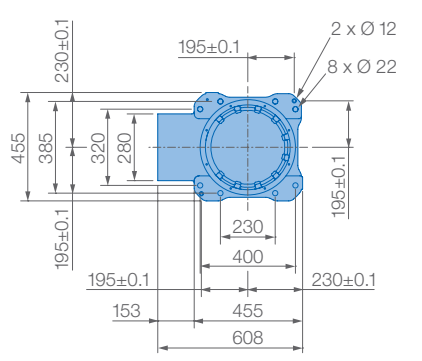
View A



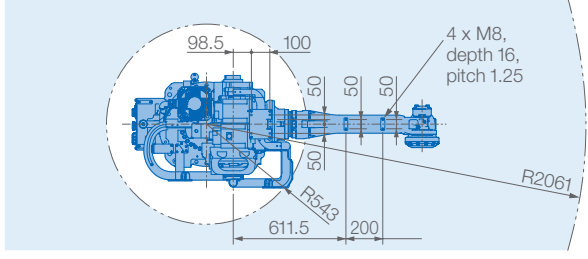
View B



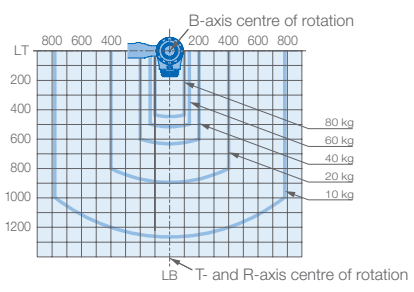
View C



Mounting option: Floor
Protection class: IP54/67



Allowable wrist load



Specifications MPL80 II						
Axes	Maximum motion range [°]	Maximum speed [°/sec.]	Allowable moment [Nm]	Allowable moment of inertia [kg · m²]	Controlled axes	
					5	
S	±180	170	-	-	Max. payload [kg]	80
L	+135/-90	170	-	-	Repeatability [mm]	±0.07
U	+35/-160	170	-	-	Max. working range R [mm]	2061
R	-	-	-	-	Temperature [°C]	0 to +45
B	±15	170	78.4	16.0	Humidity [%]	20 - 80
T	±360	350	20.5	6.1	Weight [kg]	550
					Power supply, average [KVA]	400