

YASKAWA

MOTOMAN GP50

Handling & General Applications
with the GP-series

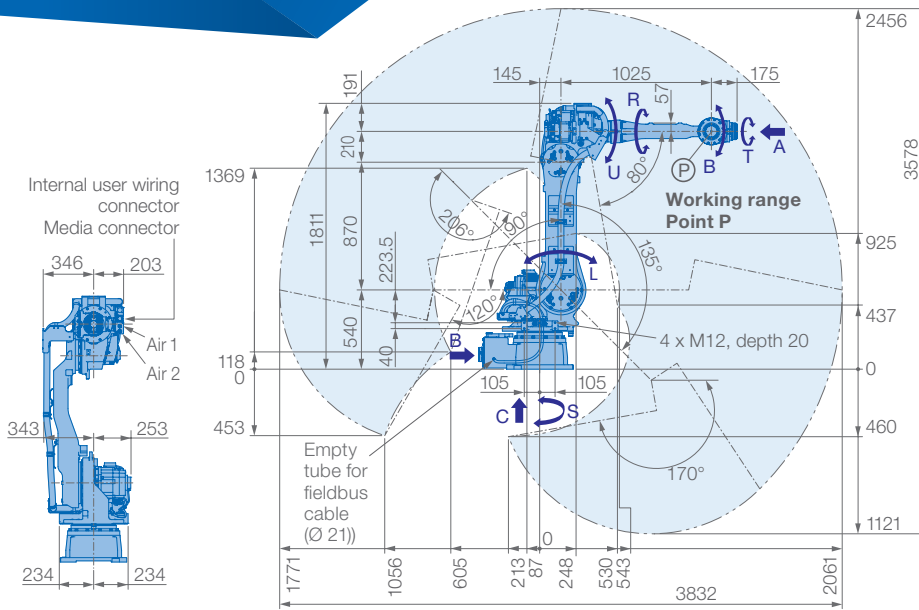


The MOTOMAN GP50 is a versatile, high speed 6-axis robot offering superior performance in material handling, machine tending, processing and dispensing applications.

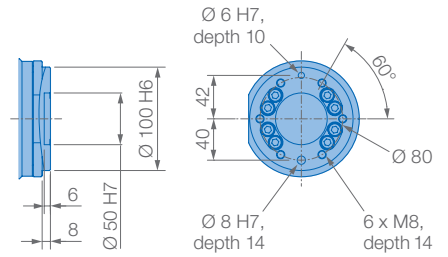
Due to its compact design, the GP50 can be placed close to machines for loading and unloading of parts.

KEY BENEFITS

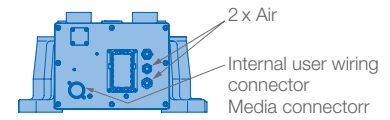
- Fast, flexible and reliable
- Ideal for a variety of applications, multi-purpose robot
- Robot with sleek design that requires minimal installation space
- 50 kg payload



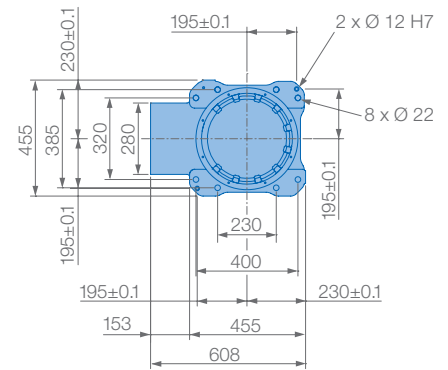
View A



View B



View C



Mounting options: Floor, ceiling, wall, tilt*

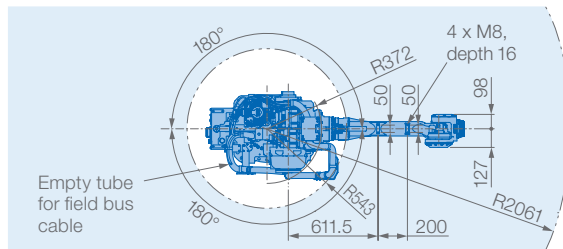
Please notice wall mounting option:
±30° S-axis limit

Please notice ceiling mounting option:
Please notice working range of B-axis

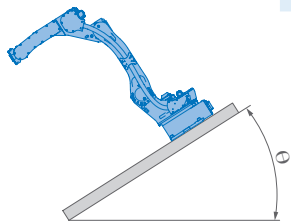
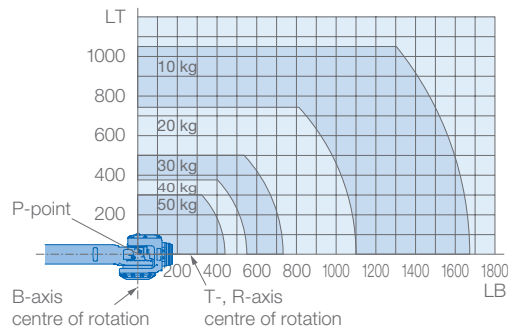
Please notice tilted robot:
0°–90° limitation of S-axis, details on request

Protection class: IP54/67
Please notice: Just valid for body/wrist, connector base not protected

*tilt with condition of angle – see table left side



Allowable wrist load



Robot installation angle θ [deg.]	S-axis operating range [deg.]
$0 \leq \theta \leq 30$	±180 (Standard)
$30 < \theta \leq 35$	±60
$35 < \theta \leq 45$	±45
$45 < \theta$	±45

Specifications GP50

Axes	Maximum motion range [°]	Maximum speed [°/sec.]	Allowable moment [Nm]	Allowable moment of inertia [kg · m ²]	Controlled axes	
					Max. payload [kg]	6
S	±180	180	–	–	50	Repeatability [mm]
L	+135/–90	178	–	–	2061	Max. working range R [mm]
U	+206/–80	178	–	–	0 to +45	Temperature [°C]
R	±360	250	216	28	20 – 80	Humidity [%]
B	±125	250	216	28	570	Weight [kg]
T	±360	360	147	11	4.0	Power supply, average [KVA]

YASKAWA Europe GmbH

Robotics Division
Yaskawastraße 1
85391 Allershausen
Germany

Tel. +49 (0) 8166 90-0
robotics@yaskawa.eu.com
www.yaskawa.eu.com

YR-1-06VX50-A00
A-07-2018, A-No. 195930