

- Space saving design
- Direct drive
- Tilt and Rotate positioner

This is a one station tilt-rotate positioner for workpieces requiring rotation about two axes. Due to its compact and space saving design, it is suitable for integration in e.g. compact welding stations.

The fixture disc can be tilted in synchronisation with the robot, $\pm 90^\circ$.

Option

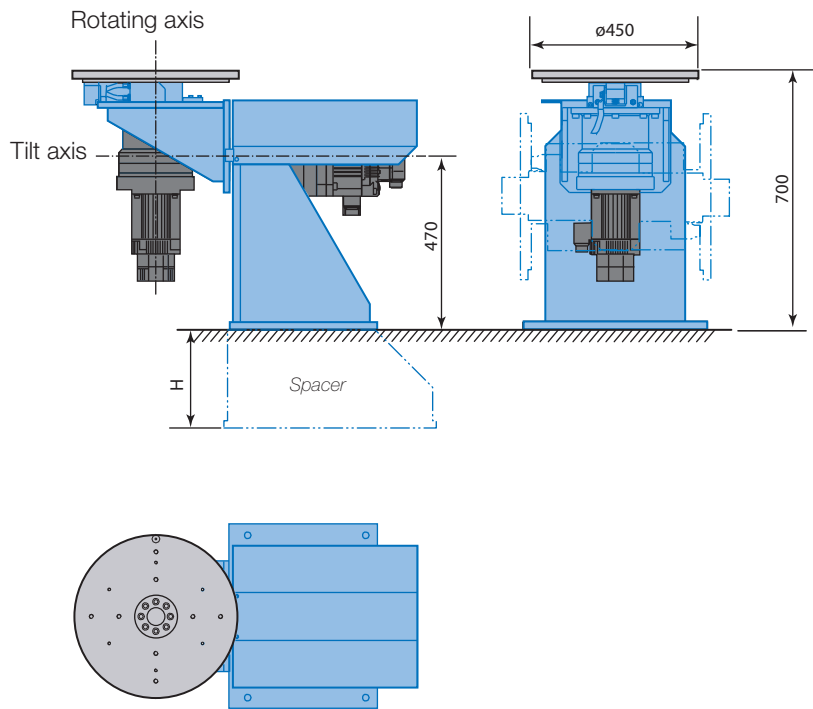
- Spacer (H = 170 or 270 mm)

Technical data		MT1-250 S2D
Maximum payload	kg	250
Welding capacity, 100 % duty cycle	A	350
Welding capacity, 60 % duty cycle	A	460
<i>Tilt axis</i>		
Torque, dynamic	Nm	1108
Torque, static	Nm	886
Rated speed	rpm	0-12.6
Maximum speed	rpm	25.2
Maximum offset (from tilt axis)	mm	361
<i>Rotating axis</i>		
Torque, dynamic	Nm	1046
Torque, static	Nm	837
Rated speed	rpm	0-9.8
Maximum speed	rpm	26.1
Rated offset from the center of gravity (COG)	mm	275

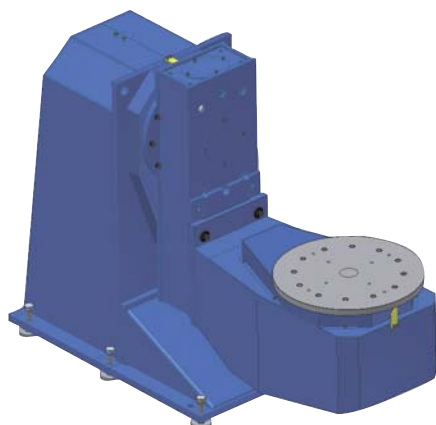
MT1

Two axes positioner
1-station

MT1-250 S2D



Technical data may be subject to change without previous notice
© YASKAWA Nordic AB · Reg No. 1016EN-01 · 2012-03



- Rigid design
- High freedom of positioning
- For heavy workpieces

This is a one station positioner for workpieces requiring rotation about two axes. Its high freedom of positioning makes it easy to find the optimum position even in complicated workpieces.

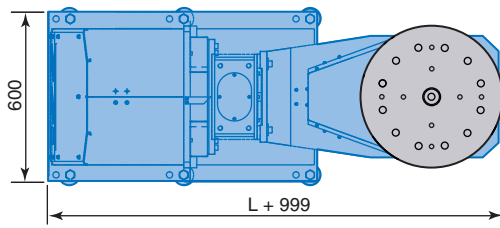
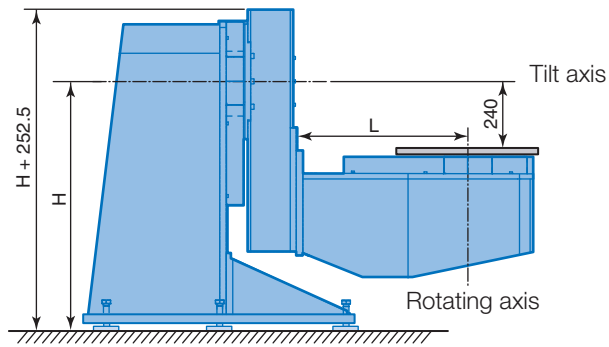
This MT1 positioner is designed to withstand the strain of handling heavy workpieces.

Technical data		MT1-500 S2DL	MT1-750 S2DL			
Maximum payload	kg	500	750			
Welding capacity, 100 % duty cycle	A	2 x 350	2 x 350			
Welding capacity, 60 % duty cycle	A	2 x 460	2 x 460			
Height (H)	mm	850	650	650	850	850
Arm length (L)	mm	850	600	750	600	750
		<i>Tilt axis</i>				
Torque, dynamic	Nm	2600	2600			
Torque, static	Nm	2080	2080			
Rated speed	rpm	0-5.3	0-5.3			
Maximum speed	rpm	15	15			
Maximum offset (from tilt axis)	mm	--	--			
		<i>Rotating axis</i>				
Torque, dynamic	Nm	2600	2600			
Torque, static	Nm	2080	2080			
Rated speed	rpm	0-5.3	0-5.3			
Maximum speed	rpm	15	15			
Rated offset from the center of gravity (COG)	mm	424	283			

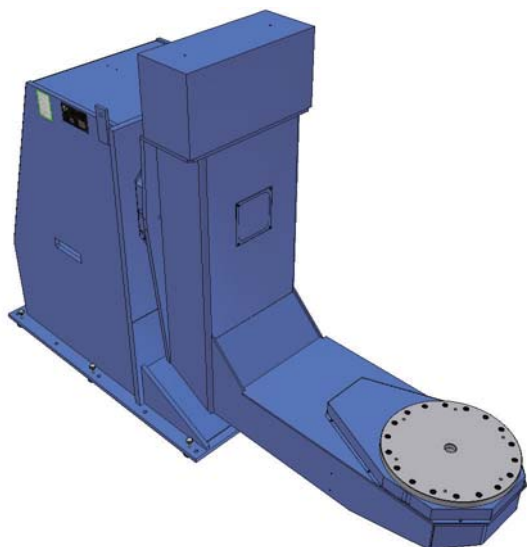
MT1

Two axes positioner
1-station

MT1-500 S2DL, MT1-750 S2DL



Technical data may be subject to change without previous notice
© YASKAWA Nordic AB · Reg No. 1061EN-01 · 2012-03



- Rigid design
- High freedom of positioning

This is a one station positioner for workpieces requiring rotation about two axes. Its high freedom of positioning makes it easy to find the optimum position even in complicated workpieces.

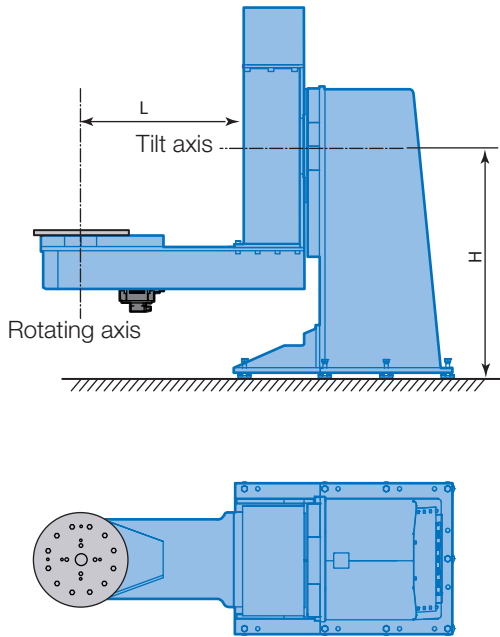
The MT1 positioner is designed to withstand the strain of heavy payloads. When used together with a MOTOMAN Gantry robot it provides the best possible workpiece access.

Technical data		MT1-1000 S2D		MT1-1500 S2D	
Maximum payload	kg	1000		1500	
Welding capacity, 100 % duty cycle	A	2 x 350		2 x 350	
Welding capacity, 60 % duty cycle	A	2 x 460		2 x 460	
Height (H)	mm	970	1200	1200	1500
Arm length (L)	mm	850	1100	1195	1615
	<i>Tilt axis</i>				
Torque, dynamic	Nm	4236		8290	
Torque, static	Nm	3389		6632	
Rated speed	rpm	0-3.6		0-3.4	
Maximum speed	rpm	9.6		9.1	
	<i>Rotating axis</i>				
Torque, dynamic	Nm	2830		6480	
Torque, static	Nm	2264		5184	
Rated speed	rpm	0-5,3		0-4,3	
Maximum speed	rpm	15		11.6	
Rated offset from the center of gravity (COG)	mm	230		352	

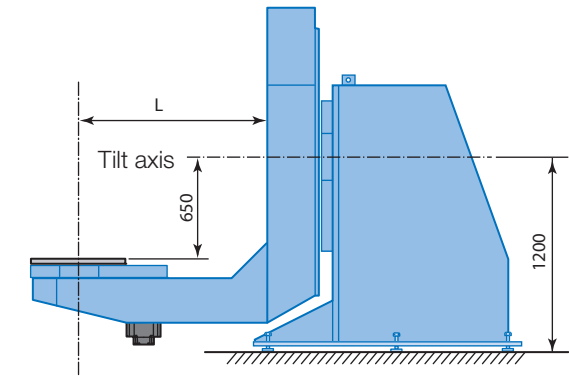
MT1

Two axes positioner
1-station

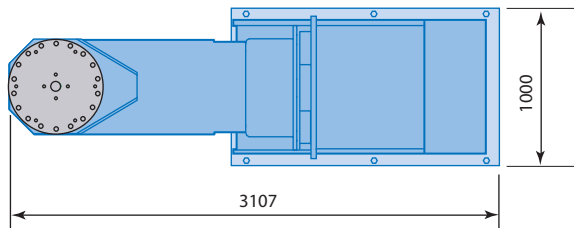
MT1-1000 S2D



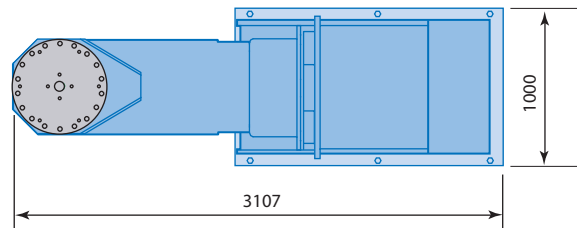
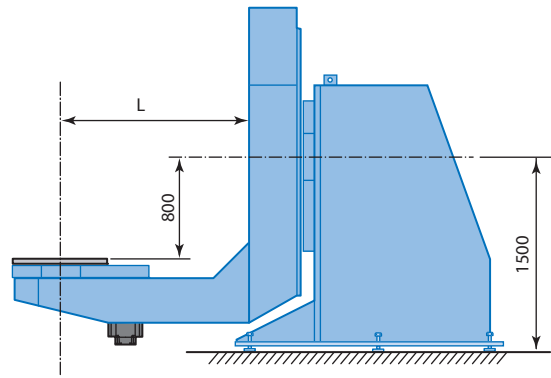
MT1-1500 S2D (H = 1200)



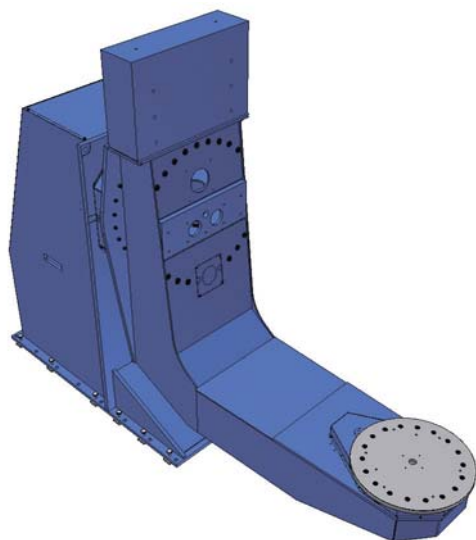
Rotating axis



MT1-1500 S2D (H = 1500)



Technical data may be subject to change without previous notice
© YASKAWA Nordic AB · Reg No. 1017EN-02 · 2012-03



- Rigid design
- Suitable for heavier parts
- High freedom of positioning

This is a one station positioner for workpieces requiring rotation about two axes. Its high freedom of positioning makes it easy to find the optimum position even in complicated workpieces.

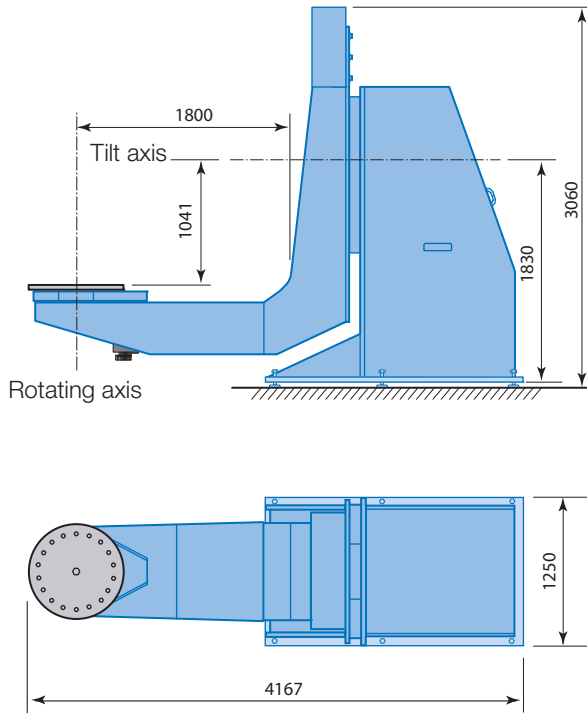
The MT1 positioner is designed to withstand the strain of heavy payloads. When used together with a MOTOMAN Gantry robot it provides the best possible workpiece access.

Technical data		MT1-3000 S2D	MT1-5000 S2D
Maximum payload	kg	3000	5000
Welding capacity, 100 % duty cycle	A	2 x 350	2 x 350
Welding capacity, 60 % duty cycle	A	2 x 460	2 x 460
<i>Tilt axis</i>			
Torque, dynamic	Nm	15058	15058
Torque, static	Nm	12045	12045
Rated speed	rpm	0-1.9	0-1.9
Maximum speed	rpm	2.5	2.5
<i>Rotating axis</i>			
Torque, dynamic	Nm	10498	10498
Torque, static	Nm	8398	8398
Rated speed	rpm	0-2.7	0-2.7
Maximum speed	rpm	3.6	3.6
Rated offset from the center of gravity (COG)	mm	285	171

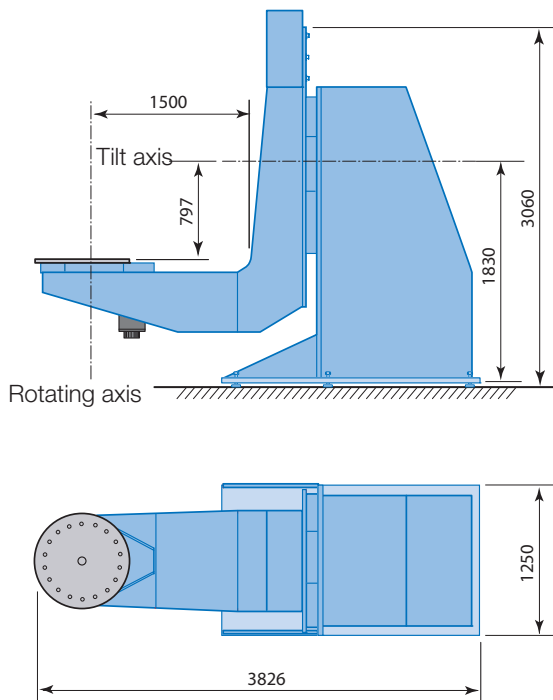
MT1

Two axes positioner
1-station

MT1-3000 S2D



MT1-5000 S2D



Technical data may be subject to change without previous notice
© YASKAWA Nordic AB · Reg No. 1018EN-01 · 2012-03